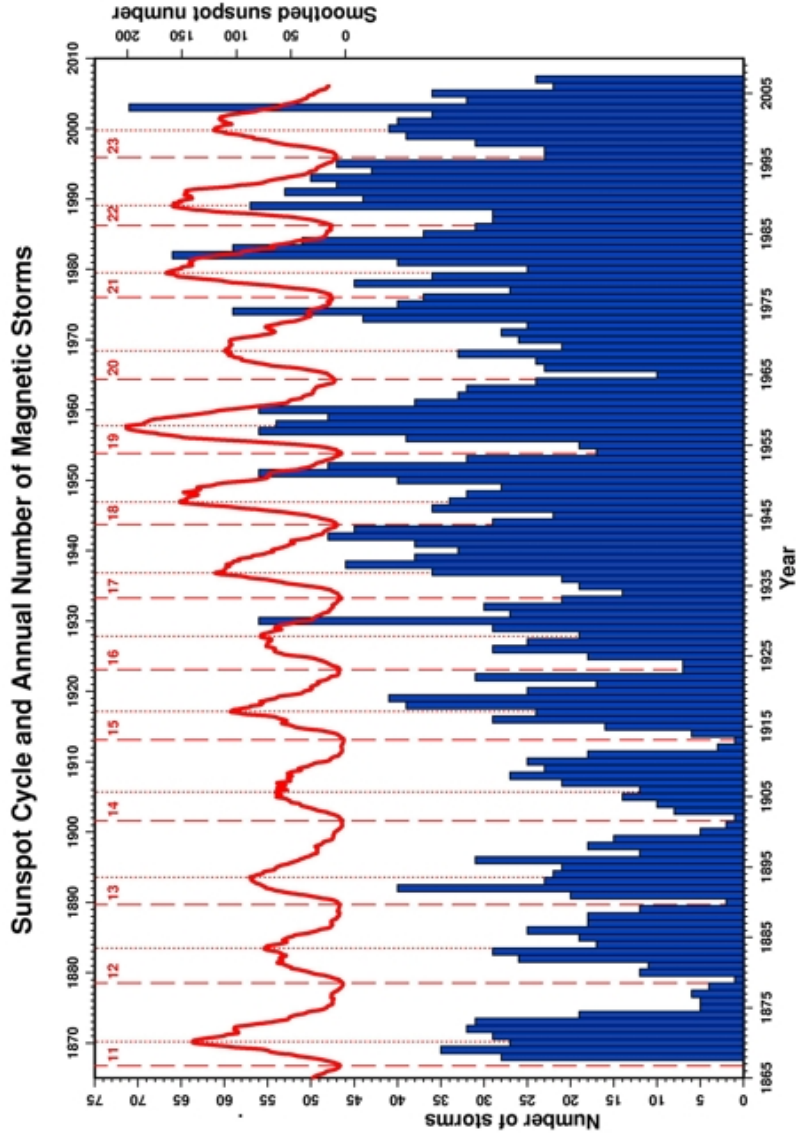
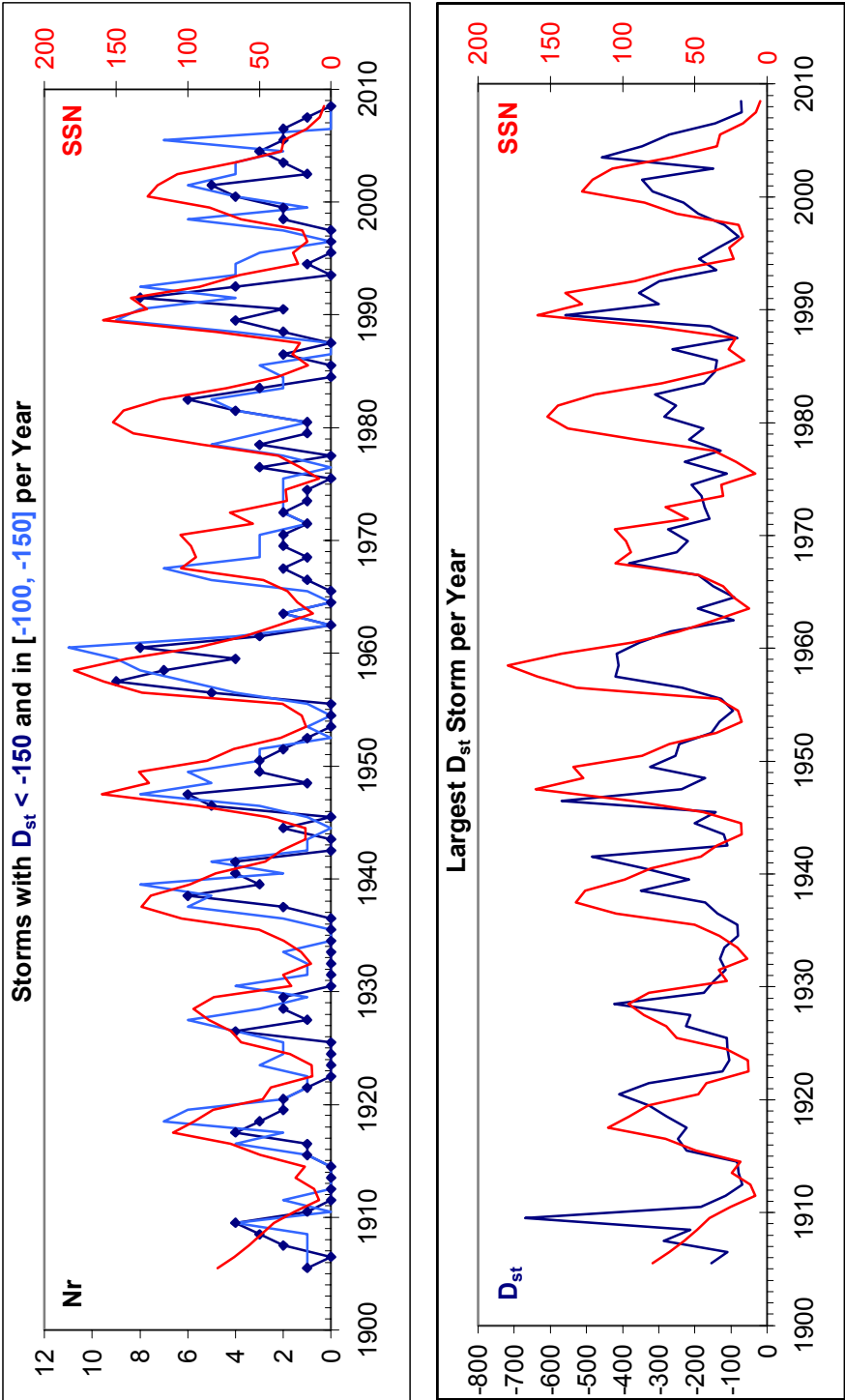


From: <http://www.geomag.bgs.ac.uk/images/image022.jpg>



Their caption: The annual number of magnetic storms is represented by each bar of the histogram. Superimposed is the smoothed sunspot number. The dashed lines indicate solar minima and the dotted lines indicate solar maxima. Note the correlation of magnetic activity with solar activity and the **apparent increase in magnetic activity with time**.



From J. Love's Dst series. Top Figure gives number of storms per year with  $D_{st} < -150$  [dark blue with dots] and between  $-150$  and  $-100$  [light blue] Bottom Figure shows the largest storm for each year. It is clear that there has not been an increase of the number of storms with time, neither in their intensity.